

A WORLD CLASS SUSTAINABILITY PLAN

FOR A WORLD
CLASS PRECINCT

RESPECT FOR RESOURCES

SUSTAINABLE LIFESTYLES

FUTURE READY



BARANGAROO SOUTH

BARANGAROO SOUTH

BARANGAROO SOUTH WILL BE A
WORLD-CLASS PRECINCT.

A WORLD-CLASS PRECINCT NEEDS A
WORLD-CLASS SUSTAINABILITY PLAN.

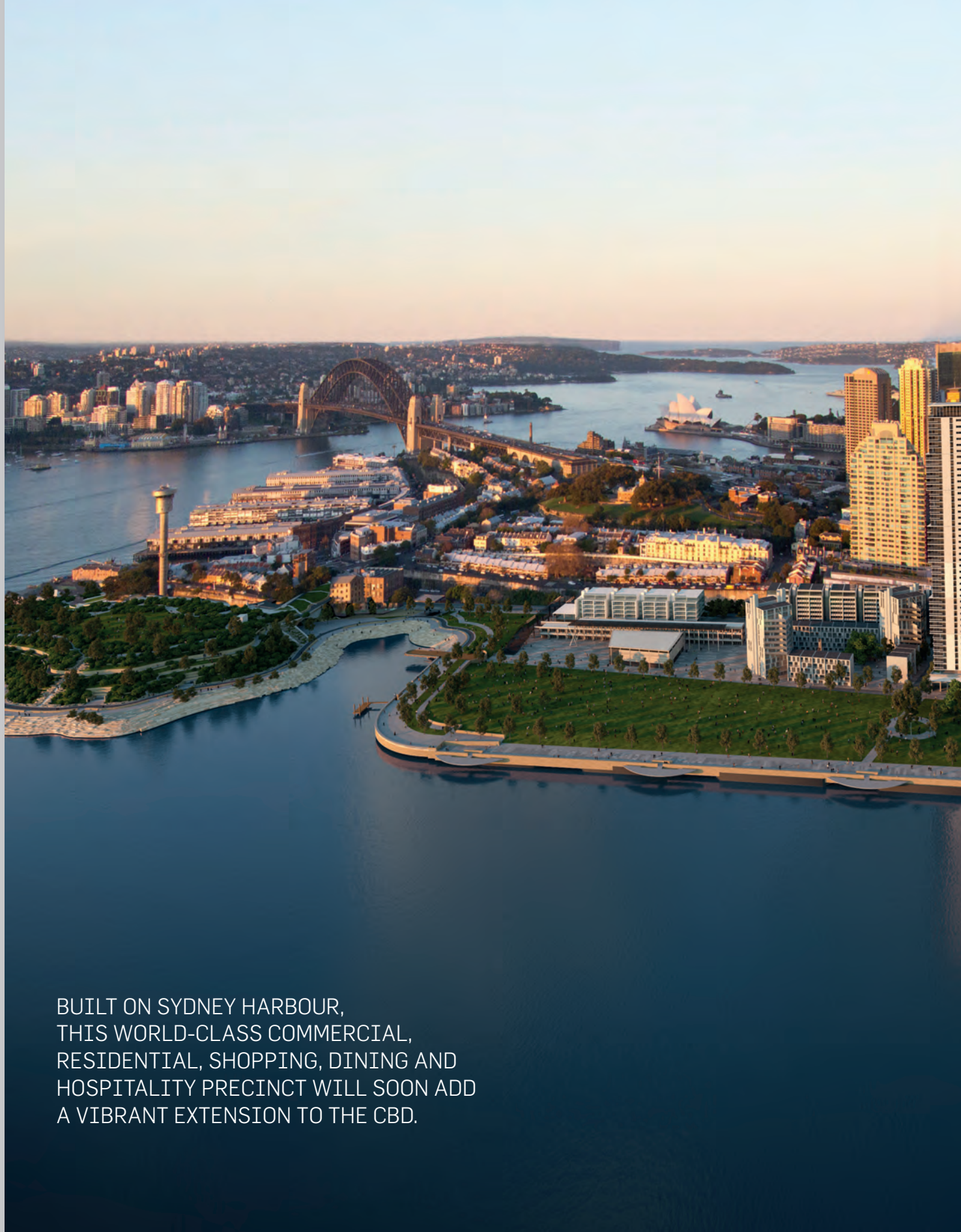
THIS DOCUMENT SHARES OUR
CURRENT STRATEGIES TO ACHIEVE
OUR TARGETS, BUT IS BY
NO MEANS THE END OF THE STORY.

WE HAVE TAKEN INSPIRATION FROM
THE CITY OF SYDNEY'S VISIONARY
2030 STRATEGY.

IN THE DEVELOPING REALM OF
SUSTAINABILITY, WE ARE ALWAYS
LOOKING TO IMPROVE AND WE
ARE OPEN TO CONSULTATION
AND FEEDBACK.

THIS IS OUR PLAN FOR HELPING MAKE
SYDNEY THE WORLD'S BEST PLACE.





BUILT ON SYDNEY HARBOUR,
THIS WORLD-CLASS COMMERCIAL,
RESIDENTIAL, SHOPPING, DINING AND
HOSPITALITY PRECINCT WILL SOON ADD
A VIBRANT EXTENSION TO THE CBD.



BARANGAROO

IS SYDNEY'S LARGEST
URBAN REGENERATION
PROJECT SINCE
THE 2000 OLYMPICS.

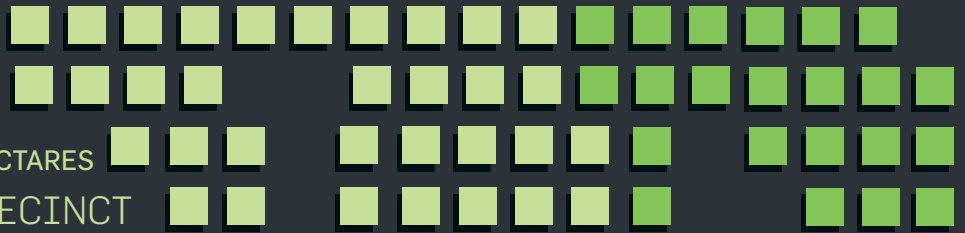
7.8

HECTARES IN SIZE
BARANGAROO SOUTH

22

HECTARES

BARANGAROO PRECINCT



BARANGAROO SOUTH CONTAINS

490,000 sq m

MIXED USE
GROSS FLOOR
AREA.

RETAIL, FOOD & BEVERAGE

80-100

LIFESTYLE AND BOUTIQUE
STORES, CAFES, RESTAURANTS,
BARS AND COFFEE SHOPS.

RESIDENTIAL

800-1000

APARTMENTS, MIXED LOW
AND HIGH RISE.

HOTEL

LANDMARK
INTERNATIONAL
HOTEL

WITH DAY-SPA, BUSINESS
CENTRE, BARS, RESTAURANTS
AND RETAIL.



TRANSPORT

A COMMITMENT HAS BEEN MADE FOR A DIRECT PEDESTRIAN LINK TO TRAINS AND BUSES AT WYNYARD AND THE CENTRAL CBD. ALSO PROPOSED ARE FERRY WHARFS, NEW BUS ROUTES, CYCLEWAYS AND PARKING FOR BIKES.

COMMUNITY AND PUBLIC FACILITIES

CULTURAL FACILITIES, A WATERFRONT SQUARE, HARBOUR COVE, WATERFRONT PROMENADE & PLAZAS.



TOTAL VALUE

\$6 OVER
AUD
BILLION.



KEY SUSTAINABILITY TARGETS

1/18
PROJECTS GLOBALLY

BARANGAROO IS ONE OF ONLY 18 PROJECTS GLOBALLY TO BE PART OF THE C40 CITIES-CLINTON CLIMATE INITIATIVE'S CLIMATE POSITIVE DEVELOPMENT PROGRAM.

0 **NET OPERATIONAL CARBON EMISSIONS**
(COVERING ENERGY, WASTE AND COMMUTER CARBON EMISSIONS).

AUSTRALIA'S FIRST LARGE SCALE CARBON NEUTRAL COMMUNITY.

TARGETING
20% REDUCTION
IN EMBODIED CARBON COMPARED WITH STANDARD CONSTRUCTION PRACTICES.

CAPABLE OF BEING WATER POSITIVE.



ON-SITE BLACKWATER TREATMENT PLANT
CAPABLE OF SUPPLYING

1 **MILLION LITRES**

OF RECYCLED WATER A DAY TO THE COMPLETED PRECINCT AND SURROUNDING SUBURBS.

90,000L
RAINWATER TANK
IN EACH COMMERCIAL TOWER TO CAPTURE AND RECYCLE RAINWATER.

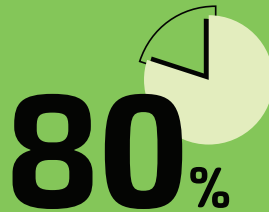
6,000 sq m
OF SOLAR PANELS
 ON-SITE.

ENERGY REQUIRED
 FOR PUBLIC SPACE
 & RECYCLED WATER
 TREATMENT PLANT

100%

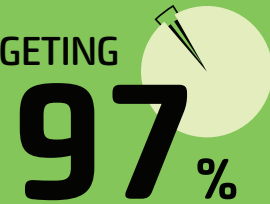
OFFSET BY ON-SITE
 RENEWABLES.

TARGETING
ZERO
 NET WASTE TO
 LANDFILL
 BY 2020.



80%
 DIVERSION OF
 OPERATIONAL WASTE
 AWAY FROM LANDFILL
 FROM DAY ONE.

TARGETING



97%
 DIVERSION OF
 CONSTRUCTION WASTE
 AWAY FROM LANDFILL.



100,000

CONSTRUCTION WORKERS
 INDUCTED ON-SITE.



A NEW HOME FOR

23,000

OFFICE WORKERS.



500+

INDIGENOUS
 WORKERS INVOLVED
 IN THE PROJECT.

≈ \$1.5 **BILLION**
 OF ESTIMATED SOCIAL
 VALUE ADDED BY THE
 DEVELOPMENT.



THE LEND LEASE SUSTAINABILITY PLAN



RESPECT FOR
RESOURCES

FUTURE
READY

SUSTAINABLE
LIFESTYLES

Lend Lease has always had sustainability as part of its DNA.

The Lend Lease sustainability plan looks at the world we want to hand on to the next generation and then considers the ways we can best create it.

Lend Lease's long-term goals and aspirations are framed in three focus areas - Respect for Resources, Sustainable Lifestyles and Future Ready.

Each focus area is then broken down into its various elements, each with commitments on what we aim to deliver by 2020.

**BARANGAROO SOUTH
IS A KEY PROJECT
FOR DELIVERING ON
THESE GOALS AND
COMMITMENTS.**

Read all about our sustainability commitments at:

www.lendlease.com

CHOOSE A SUSTAINABILITY ISSUE TO SEE WHAT WE'RE DOING AT BARANGAROO SOUTH.

RESPECT FOR RESOURCES

"THE RESOURCES WE
USE WILL BE RECYCLED,
RESPONSIBLE, REUSABLE"

Resources are one of the most fundamental constraints facing our world. With many raw materials predicted to become more scarce as this century passes, a more considered approach to their use is essential. It's also a smart business approach.

SUSTAINABLE LIFESTYLES

"WHAT WE CREATE WILL
LEAVE A POSITIVE SOCIAL
LEGACY"

How something is constructed is just a small part of its impact on the world. By considering how people interact with and move between the places we create and the sort of communities that exist within them, we can ensure our projects have a far more positive impact on individuals and society as a whole.

FUTURE READY

"WE WILL FUTURE READY
OUR BUSINESS AND THE
BUILT ENVIRONMENT"

With climate change and technological innovation set to change the world we live in faster than ever before, our challenge is to create places and infrastructure that can be adapted for both predicted and unpredictable future changes.

CARBON



ENERGY
EFFICIENCY



WATER



WASTE



MATERIALS



NATURAL
ENVIRONMENT



CREATING
COMMUNITY



EMPLOYMENT,
SKILLS & TRAINING



DIVERSITY &
CULTURE



SAFETY, HEALTH &
WELLBEING



CLIMATE
CHANGE



GOVERNANCE &
RESPONSIBLE
INVESTMENT



VALUE CREATION



INNOVATION





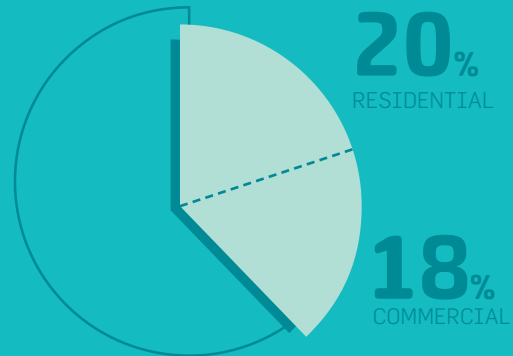
CARBON

DID YOU KNOW

BUILDINGS
ALONE ARE
RESPONSIBLE
FOR

38%

OF ALL GREENHOUSE
GAS EMISSIONS.*



OUR AIM IS TO MAKE BARANGAROO SOUTH
A DEMONSTRATION OF HOW BETTER DESIGN
AND BUILDING PRACTICES CAN, ULTIMATELY,
REDUCE THIS IMPACT TO ZERO.





AVOID

Through better building design, efficient precinct infrastructure and education and behavioural initiatives.

REDUCE

Through on and off-site low carbon and renewable energy sources.

MITIGATE

Through the purchase of carbon offsets to cover residual emissions such as commuter carbon emissions.

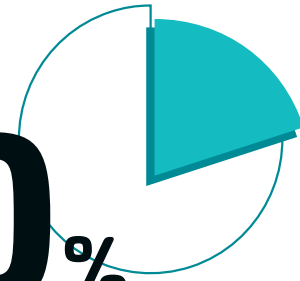
OUR APPROACH

EMBODIED CARBON

DESCRIBES THE CARBON EMISSIONS CREATED IN THE PRODUCTION AND TRANSPORTATION OF MATERIALS FOR A BUILDING AS WELL AS THE CARBON EMISSIONS GENERATED BY THE CONSTRUCTION PROCESS ITSELF.

OUR GOAL:

20%
REDUCTION



IN EMBODIED CARBON COMPARED WITH STANDARD CONSTRUCTION PRACTICES.

We are investigating ways to achieve this by using fewer materials through efficient design and replacing carbon intensive materials such as concrete, steel, aluminium and glass with less carbon intensive alternatives.

OPERATIONAL CARBON

DESCRIBES THE CARBON EMISSIONS CREATED FROM THE PRECINCT'S DAY TO DAY USE. LIGHTING, HEATING, COOLING AND TRANSPORTATION OFFER THE BEST OPPORTUNITIES FOR EMISSIONS REDUCTION.

BARANGAROO SOUTH WILL BE AUSTRALIA'S FIRST LARGE SCALE CARBON NEUTRAL COMMUNITY WITH

ZERO
NET CARBON
EMISSIONS
IN OPERATION

COVERING ENERGY, WASTE AND COMMUTER CARBON EMISSIONS.



EVERY DAY

**23,000 WORKERS,
1,200 RESIDENTS &
33,000 VISITORS**

WILL BE ENCOURAGED
TO USE GREEN TRAVEL
OPTIONS.

A direct pedestrian link to trains and buses at Wynyard and the central CBD, as well as proposed ferry wharfs, new bus routes, cycleways and end-of-trip bike facilities will make the choice easier.



CARBON EMISSIONS
FROM STAFF
COMMUTING WILL
BE OFFSET THROUGH
THE PURCHASE OF
CARBON OFFSETS.

ZERO CARBON FROM WASTE.

We are working with our waste partners to ensure recovery of all recyclable materials and to treat and recycle organics that, in a landfill, would produce methane, a powerful greenhouse gas.

OFF-SITE RENEWABLE ENERGY PURCHASED THROUGH A CARBON COMMUNITY FUND

will be utilised to ensure a carbon
neutral outcome in operation.

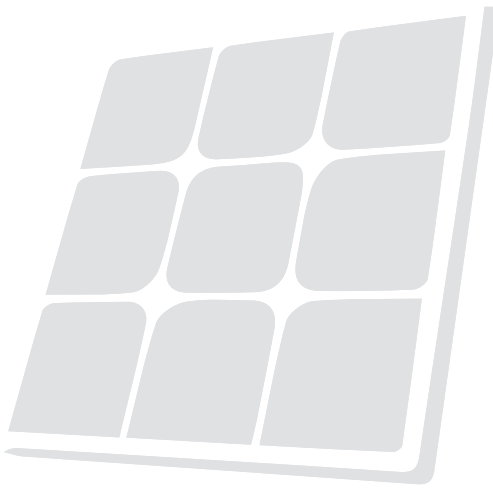
WE ARE INVESTIGATING OPTIONS FOR
ON-SITE LOW CARBON ENERGY
GENERATION FOR THE PRECINCT, SUCH AS
**CO-GENERATION &
TRI-GENERATION.**

THE ENERGY NEEDED TO POWER ALL PUBLIC AREAS
OF BARANGAROO SOUTH AND THE CENTRALISED
BLACKWATER TREATMENT PLANT WILL BE OFFSET BY

APPROXIMATELY

6,000sq m

OF ON-SITE SOLAR PANELS.



THIS WILL GENERATE

1,000MWh
OF ENERGY A YEAR.

ENOUGH TO POWER

137 HOMES.





ENERGY EFFICIENCY

DID YOU KNOW

BUILDINGS
ACCOUNT FOR
OVER

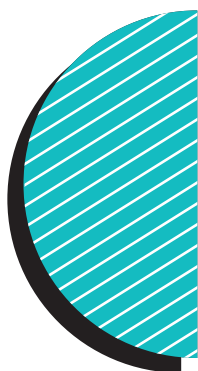
40%

OF THE WORLD'S
ELECTRICITY USAGE.*



BY REDUCING THIS FIGURE, THE PROPERTY INDUSTRY CAN MAKE AN ENORMOUS DIFFERENCE TO CLIMATE CHANGE AND REDUCE ENERGY BILLS FOR TENANTS AND RESIDENTS IN THE PROCESS.





VERTICAL SHADING SYSTEM

on the three commercial towers follows the sun's path to reduce solar gain, provide superior shading and reduce cooling needs.

METERING, MONITORING & VISUAL DISPLAYS

IN OFFICES AND HOMES TO EDUCATE USERS AND ASSIST IN REDUCING ENERGY CONSUMPTION.

CENTRALISED PLANT & INFRASTRUCTURE

OPERATED ACROSS THE BUILDINGS AT BARANGAROO SOUTH MEANS REDUCED ENERGY CONSUMPTION AND PRECINCT SCALE EFFICIENCIES.

ENERGY EDUCATION IN THE BARANGAROO SOUTH COMMUNITY WILL PLAY A KEY ROLE IN ENSURING RESPONSIBLE ENERGY USE IN THE PRECINCT.

70_{kWp} CENTRAL CHILLED WATER PLANT

COOLS THE PRECINCT USING HARBOUR WATER.

This is more energy efficient than traditional cooling tower based systems and will be the largest of its kind in Australia.

6 OFFICE BUILDINGS
WILL TARGET
★ ★ ★ ★ ★ ★
GREEN STAR OFFICE
DESIGN & AS BUILT
V3 RATINGS.

THESE WILL BE AMONG
THE FIRST
HIGH RISE OFFICE BUILDINGS
TO BE RATED 6 STAR UNDER
VERSION 3 OF THE RATING TOOL.

5 MULTI-UNIT
RESIDENTIAL
BUILDINGS
WILL TARGET
★ ★ ★ ★ ★ ★
GREEN STAR
DESIGN &
AS BUILT.

6 THE HOTEL
WILL TARGET
★ ★ ★ ★ ★ ★ ★ ★
GREEN STAR
RATING UNDER THE
GREEN BUILDING
COUNCIL'S CUSTOM
RATING TOOL.

5 EXCEEDING
★ ★ ★ ★ ★ ★ ★ ★
NABERS
RATING.

ENERGY EFFICIENCY MEASURES LESSEN CARBON EMISSIONS
OF THE PRECINCT. [SEE CARBON FOR MORE ON THIS.](#)





WATER

DID YOU KNOW

BUILDINGS
ALONE ARE
RESPONSIBLE
FOR

12%

OF THE WORLD'S WATER USE.*



BARANGAROO SOUTH AIMS TO BE A WATER POSITIVE PRECINCT.

“WATER POSITIVE” MEANS BARANGAROO SOUTH IS DESIGNED TO EXPORT MORE RECYCLED WATER THAN THE POTABLE (DRINKING) WATER IT USES, THEREBY REDUCING DEMAND ON PRECIOUS WATER RESOURCES.





AVOID

Water use by replacing cooling towers with harbour water heat rejection.

REDUCE

Water use by efficient design combined with education and behavioural initiatives.

REUSE

Rainwater capture and reuse.

Stormwater diversion for reuse in parklands to the north.

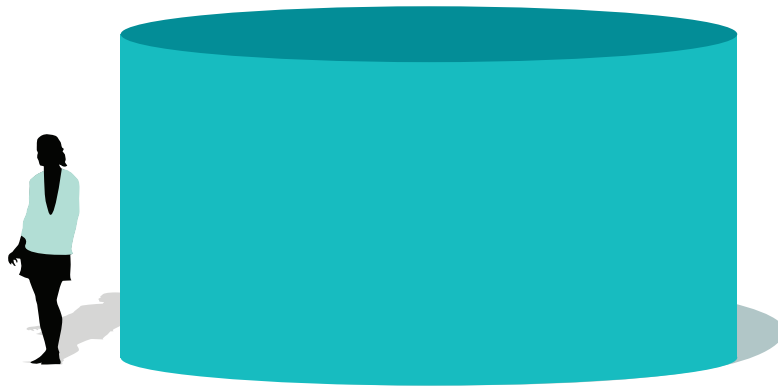
RECYCLE

Blackwater treatment plant supplying recycled water to the site.

EXPORT

Recycled water export greater than precinct potable use.

OUR APPROACH



90,000L RAINWATER TANK

IN EACH OF THE COMMERCIAL TOWERS
TO CAPTURE AND REUSE RAINWATER
WITHIN THE BUILDINGS.

ON COMPLETION, THE WATER RECYCLING
SYSTEM WILL BE CAPABLE OF SUPPLYING

1 MILLION LITRES OF GRADE A
RECYCLED
WATER
A DAY

TO THE PRECINCT & SURROUNDING SUBURBS.



THE CENTRALISED CHILLED WATER PLANT at Barangaroo South is designed to support the cooling systems for all of the buildings. Once the development is complete and the buildings are fully occupied, the harbour water cooling system will not only save energy,

IT COULD SAVE UP TO

100
MILLION
LITRES OF WATER

BEING TAKEN FROM
THE SYDNEY WATER
MAINS NETWORK
EACH YEAR.

SMART DESIGN. Ultra efficient fixtures and appliances, as well as the incorporation of water sensitive urban design principles into the public domain and landscape plans, will reduce water usage across the precinct.

BLACKWATER TREATMENT & REUSE. The blackwater treatment plant will enable captured and surplus wastewater to be recycled and reused on-site in place of drinking water for things like toilet flushing, irrigation and other appropriate uses.

STORMWATER TREATMENT. Stormwater from the northern catchment will be diverted north for use in the headland park. The first portion of stormwater falling on the site (often referred to as the first flush of water which contains pollutants requiring treatment) will be captured and treated to national best practice standards before being returned to the harbour.

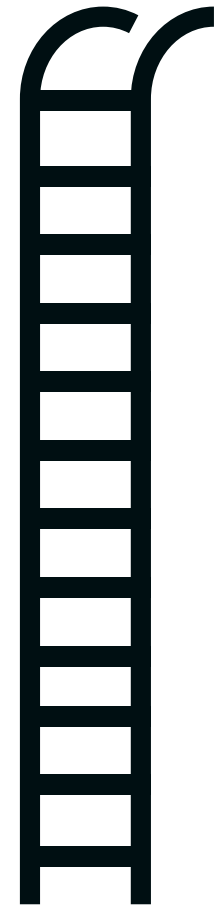
WATER EDUCATION IN THE BARANGAROO SOUTH COMMUNITY WILL PLAY A KEY ROLE IN ENSURING WE ARE WATER POSITIVE. **EDUCATION AROUND THE USE – AND OVERUSE – OF WATER WILL BE PROVIDED TO WORKERS, BUILDING MANAGERS, RESIDENTS AND VISITORS.**

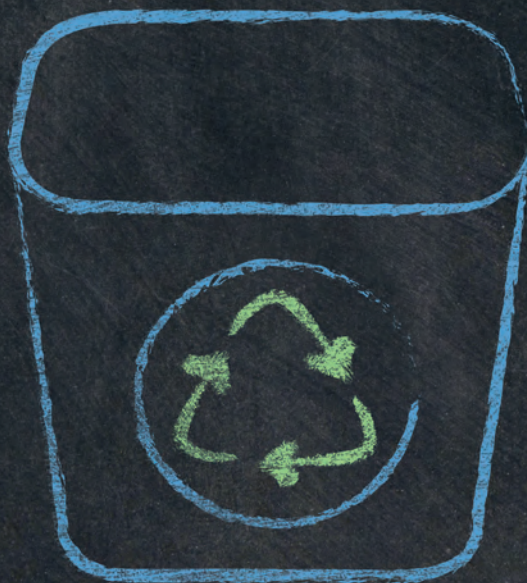
IN ONE
YEAR

OPERATING AT FULL
CAPACITY, BARANGAROO
SOUTH WILL BE ABLE
TO CONTRIBUTE THE
EQUIVALENT OF OVER

70

OLYMPIC
SWIMMING
POOLS OF
RECYCLED
WATER TO
THE CBD
NEIGHBOURHOOD.





WASTE

DID YOU KNOW
BUILDINGS ARE
RESPONSIBLE
FOR

30-40%

OF THE WORLD'S SOLID WASTE.*

CLEVER RECYCLING AND COMPOSTING CAN REDUCE
THIS SIGNIFICANTLY. BARANGAROO SOUTH AIMS
TO BE A NET ZERO WASTE COMMUNITY.

* SOURCE: UNITED NATIONS SUSTAINABLE BUILDINGS AND CONSTRUCTION INITIATIVE





PREVENT

Working with all tenants, visitors and contractors to educate on waste prevention, minimisation, recycling and reuse.

RECYCLE

Ensure waste is recycled using off-site advanced waste treatment process.

ZERO WASTE

Offset residual waste to landfill by leveraging the Barangaroo waste contract to include waste streams from other parts of the CBD to deliver a net waste to landfill balance below zero.

ZERO EMISSIONS

Off-site waste to energy technology to generate electricity being explored.

Zero greenhouse gas emissions technologies utilised for waste treatment.

OUR APPROACH

0 TARGETING NET WASTE TO LANDFILL BY 2020.

While some residual material from the precinct will still need to be sent to landfill, our net zero waste in operation can be achieved by extending our advanced off-site recycling and waste treatment process to include waste from surrounding areas. This can effectively offset the portion of waste that has no other option than going to landfill.

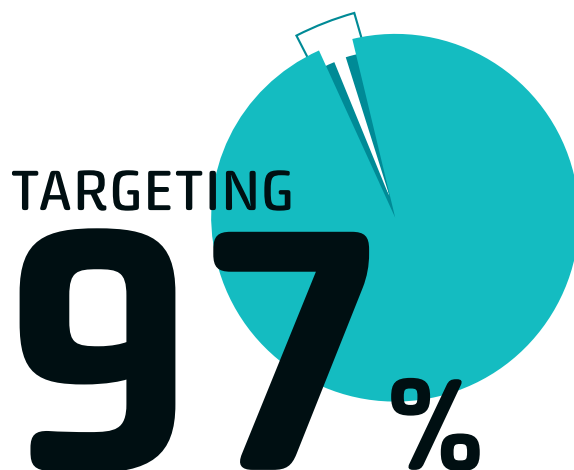
WASTE EDUCATION IN THE BARANGAROO SOUTH COMMUNITY WILL PLAY A KEY ROLE IN ENSURING WE ARE ON OUR WAY TO ZERO WASTE.

We will team with workers, locals and visitors to minimise waste generation and maximise recycling.



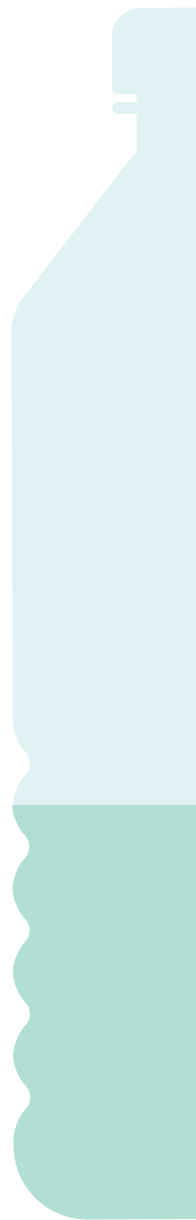
DIVERTED AWAY FROM
LANDFILL FROM DAY ONE.

Key initiatives include source-separated collection and off-site advanced recycling processes including the treatment of organics.



DIVERSION OF
CONSTRUCTION
WASTE
AWAY FROM LANDFILL.





EASILY ACCESSIBLE

PUBLIC DRINKING WATER

WILL ENCOURAGE
REDUCTION IN
BOTTLED WATER
CONSUMPTION,
REDUCING THE
LITTER AND WASTE
ASSOCIATED WITH
EMPTY PLASTIC
BOTTLES.

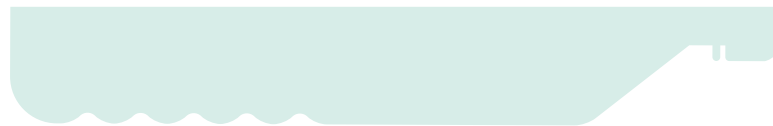
DID YOU KNOW

IT
TAKES

7
LITRES



OF WATER TO MAKE
A **1 LITRE** PLASTIC
WATER BOTTLE*



* SOURCE: AUSTRALIAN MUSEUM BLOG POST. [HTTP://AUSTRALIANMUSEUM.NET.AU/BLOGPOST/SCIENCE/SAY-NO-TO-PLASTIC-WATER-BOTTLES](http://australianmuseum.net.au/blogpost/science/say-no-to-plastic-water-bottles)

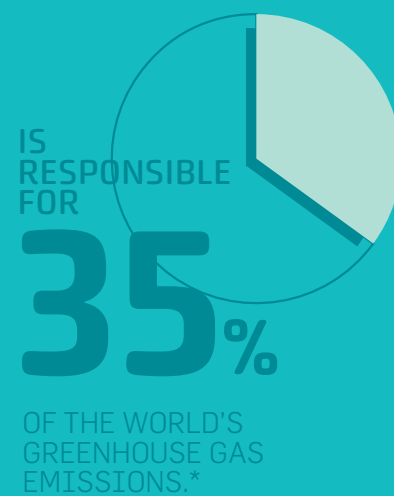
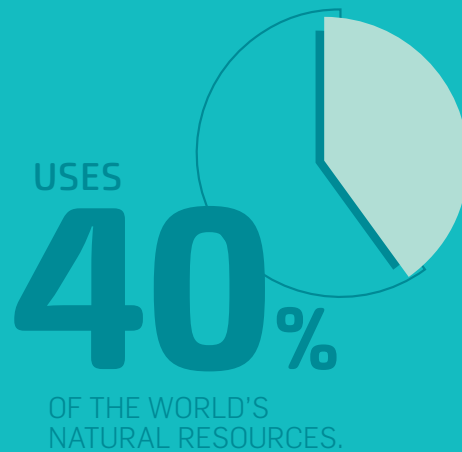




MATERIALS

DID YOU KNOW

CONSTRUCTION, OPERATION
AND DECONSTRUCTION
OF BUILDINGS



LIFECYCLE ANALYSES OF MATERIALS CAN HELP
US UNDERSTAND, THEN REDUCE THESE IMPACTS.



NOW

WE ARE CONDUCTING
LIFECYCLE ANALYSES ON THE
TOP

20

MATERIALS

USED ON THE SITE.

This will help us better understand the impact that materials selection and construction techniques can have in reducing the development's embodied carbon and broader supply chain and environmental impacts.

FUTURE

WE WILL ANALYSE THE
ECOLOGICAL & CARBON
FOOTPRINT

for the precinct to assist us in benchmarking our performance and to learn more about where to focus our efforts in reducing our impact on the environment.

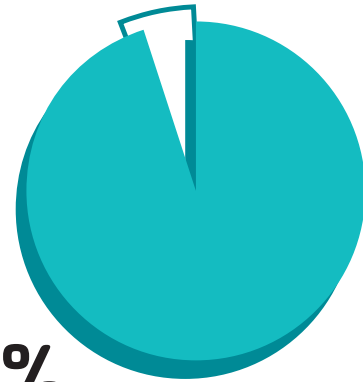
SUPPLIER ENGAGEMENT & PARTNERING.

We aim to reduce the upstream impacts of the development related to materials use by engaging with our suppliers and partnering to create more efficient and lower impact materials and products, and ensure they demonstrate compliance with social and environmental considerations.

MORE THAN

95%
OF TIMBER

USED ON THE SITE
WILL BE SOURCED
FROM AUSTRALIAN
FORESTRY STANDARD
(AFS) AND FOREST
STEWARDSHIP
COUNCIL (FSC)
CERTIFIED SOURCES.

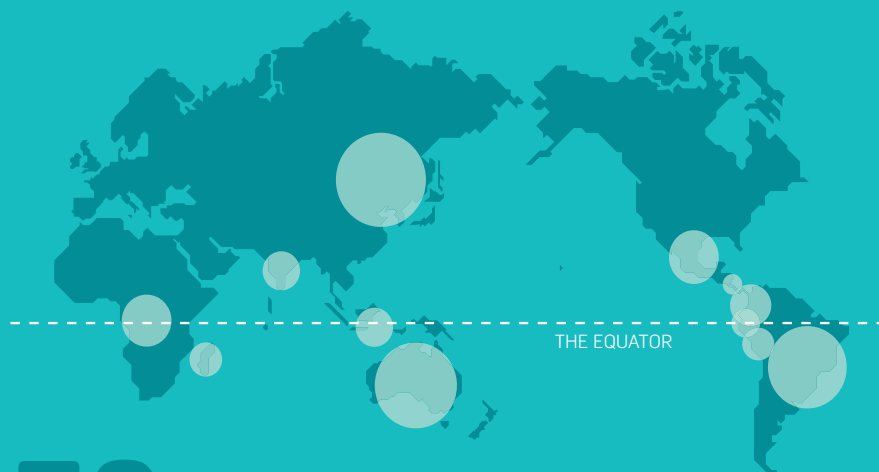




NATURAL ENVIRONMENT

DID YOU KNOW

SPECIES DENSITY IS
THOUGHT TO BE GREATEST IN
THE SOUTHERN HEMISPHERE.



70% OF THE WORLD'S
SPECIES ARE FOUND IN
JUST 12 COUNTRIES.*

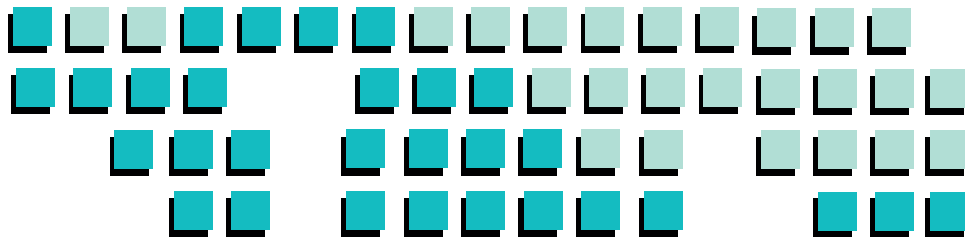
AUSTRALIA, BRAZIL, CHINA, COLOMBIA, COSTA RICA, THE DEMOCRATIC
REPUBLIC OF CONGO, ECUADOR, INDIA, INDONESIA, MADAGASCAR,
MEXICO AND PERU.

BARANGAROO SOUTH WILL BRING
BIODIVERSITY BACK TO AN AREA OF THE
CITY THAT HAS BEEN PREDOMINANTLY
UTILISED BY INDUSTRY FOR THE PAST
CENTURY.

* SOURCE: WWW.SCIDEV.NET/EN/FEATURES/BIODIVERSITY-FACTS-AND-FIGURES-1.HTML



OVER
50% OF THE WHOLE
BARANGAROO SITE
WILL BE OPEN SPACE



INTERCONNECTED BY VEGETATION LEADING
TOWARD THE LARGE HEADLAND PARK.

**MARINE HABITAT
WILL BE PROTECTED
AND ENHANCED**

THROUGH IMPROVED
SEA WALL DESIGN AND
FURTHER STUDIES
ON MARINE HABITAT
PROTECTION AND
RESTORATION.

DURING CONSTRUCTION,
A LARGE SCALE, ON-SITE

WATER TREATMENT PLANT

WILL CAPTURE WATER, TREAT IT
AND THEN RETURN CLEAN WATER TO
THE HARBOUR, SO IMPROVING THE
NATURAL MARINE ENVIRONMENT.



BARANGAROO SOUTH
WAS A FORMER
INDUSTRIAL
SITE, REQUIRING
EXTENSIVE
REMEDICATION. OUR
PLANS INCLUDE THE

CLEAN UP OF THIS BROWNFIELDS SITE.

COMMUNITY GARDENS

INTEGRATE LOCAL AREA
FOOD PRODUCTION INTO
THE PRECINCT.

THE MAJORITY OF PLANTS WILL BE NATIVE & ENDEMIC SPECIES

TO ENHANCE LOCAL AREA
BIODIVERSITY.

GREEN ROOF & GREEN WALL STRUCTURES

INTRODUCE NATURE
AROUND WORKPLACES
AND HOMES.



Γειά bonjour สวัสดี

안녕하세요 guten tag

Привет 今日は Ei! Ei!

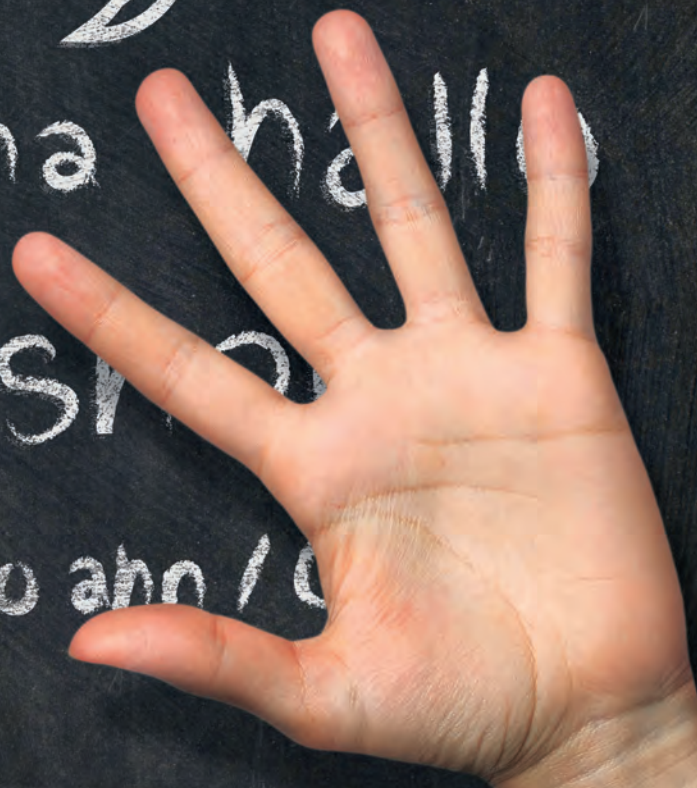
Hej  喂

Hola ciao

goddag aloha hallo

こんにちは سلام

Привет Cháo ahn / 你好



CREATING COMMUNITY

BARANGAROO SOUTH WILL WELCOME



18 MILLION
VISITS EVERY YEAR

23,000
WORKERS PER DAY

1,200-1,500
RESIDENTS



BARANGAROO IS SET TO BECOME THE
CENTRAL HUB OF SUSTAINABLE LIVING
IN SYDNEY.

THROUGH CULTURE, PUBLIC ART AND
EVENTS, BARANGAROO SOUTH WILL ENRICH
THE DAILY LIFE OF THIS COMMUNITY AND
REINFORCE SYDNEY'S REPUTATION AS ONE
OF THE WORLD'S MOST ENJOYABLE CITIES.



ACTIVATING

Enlivening the space through new programs, events, activities and experiences.

Completing the cultural "ribbon", connecting public art, theatre, innovation and performance.

Reaffirming our cultural heritage, celebrating indigenous, multicultural and maritime history.

LEARNING

Focusing on capacity building through school, industry, trade and tertiary skills programs.

Building indigenous capacity through professional job creation, lifelong education and minority procurement.

Delivering lifelong programs including workers, visitors, residents and tenants.

WELCOMING

Reconnecting Barangaroo to the people of Sydney.

Providing a socially inclusive destination for all ages, cultures and experiences.

Connecting through technology and, importantly, through inclusive master planning.

ENJOYING

Encouraging active and healthy living opportunities for residents, workers and visitors.

Developing infrastructure to foster active transport, e.g. Green Travel Plan.

Ensuring equal access and inclusive mobility.

INVESTING

Fostering new business through innovative commercial and retail space opportunities.

Establishing the governance of community infrastructure and programs.

Providing human and community services including childcare.



OUR APPROACH

BARANGAROO SOUTH HAS BEEN REGISTERED AS ONE OF THE FIRST PROJECTS TO TRIAL THE GREEN BUILDING COUNCIL OF AUSTRALIA'S NEWLY-RELEASED

GREEN STAR COMMUNITIES

PILOT RATING TOOL.

The tool is designed to support delivery of more sustainable, productive and livable communities.



KEY CRITERIA ARE:

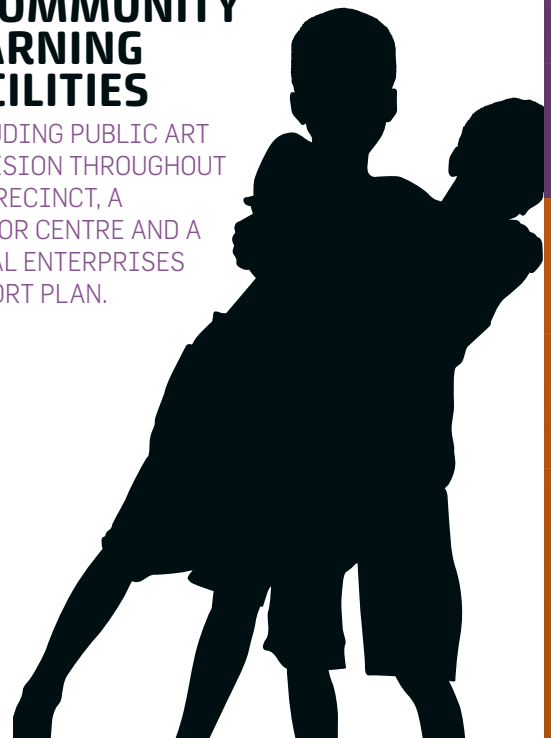
LIVABILITY
ECONOMIC PROSPERITY
ENVIRONMENT
DESIGN
GOVERNANCE
INNOVATION

COMMUNITY AMENITIES & SERVICES

INCLUDING BARANGAROO INNOVATION CENTRE, CHILDCARE, KEY WORKER HOUSING, AS WELL AS AN AFFORDABLE OFFICE AND RETAIL STRATEGY.

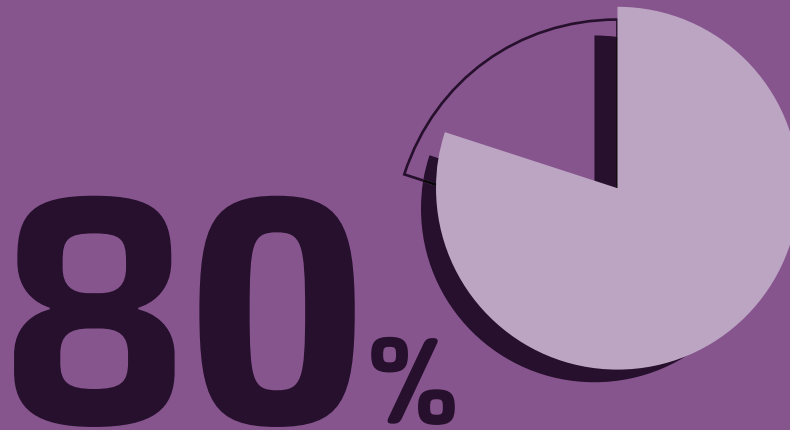
ARTS, CULTURAL & COMMUNITY LEARNING FACILITIES

INCLUDING PUBLIC ART PROVISION THROUGHOUT THE PRECINCT, A VISITOR CENTRE AND A SOCIAL ENTERPRISES SUPPORT PLAN.





EMPLOYMENT, SKILLS & TRAINING



OF OUR SOCIAL RETURN ON INVESTMENT IS RELATED TO NEW EMPLOYMENT, SKILLS AND TRAINING OPPORTUNITIES FOR THE COMMUNITY PROVIDED BY BARANGAROO.

BARANGAROO SOUTH IS EXPECTED TO ENGAGE A TOTAL WORKFORCE OF OVER 100,000 PEOPLE DURING ITS CONSTRUCTION.





OVER THE 10-YEAR CONSTRUCTION PERIOD, BARANGAROO SOUTH WILL EMPLOY A RANGE OF PRIORITY GROUPS, INCLUDING INDIGENOUS AUSTRALIANS, WORKERS WITH LOW LANGUAGE, LITERACY AND NUMERACY SKILLS, APPRENTICES AND MATURE AGE WORKERS.

10,000

PEOPLE

EXPECTED TO BE TRAINED WITH NEW ACCREDITED SKILLS QUALIFICATIONS IN A VARIETY OF SPECIALIST AND CRITICAL AREAS ACROSS THE CONSTRUCTION AND ASSOCIATED TRADES.

WE ARE TARGETING:

50,000

LEARNING OUTCOMES.

100

'NEXT GENERATION'
CONSTRUCTION
INDUSTRY LEADERS.

30,000

STUDENTS

from NSW and beyond will learn about the urban regeneration of Barangaroo and its sustainability plans.

DISADVANTAGED YOUTH.

Part of our active investment program will involve programs that support innovative social enterprises, such as those that provide work opportunities to disadvantaged youth.

LIFELONG LEARNING STRATEGY.

Lend Lease's lifelong learning strategy aims to provide educational opportunities to the surrounding community in areas such as Millers Point and Pyrmont, to the people of Greater Sydney, as well as to the new

community of residents and workers at Barangaroo South itself. Initiatives include community education, schools programs, skills and training, and research and development.

ESTABLISHMENT OF THE 'BARANGAROO SKILLS EXCHANGE',

which will focus on developing human capital across the project by establishing learning platforms and providing community education in partnership with public and private training providers.

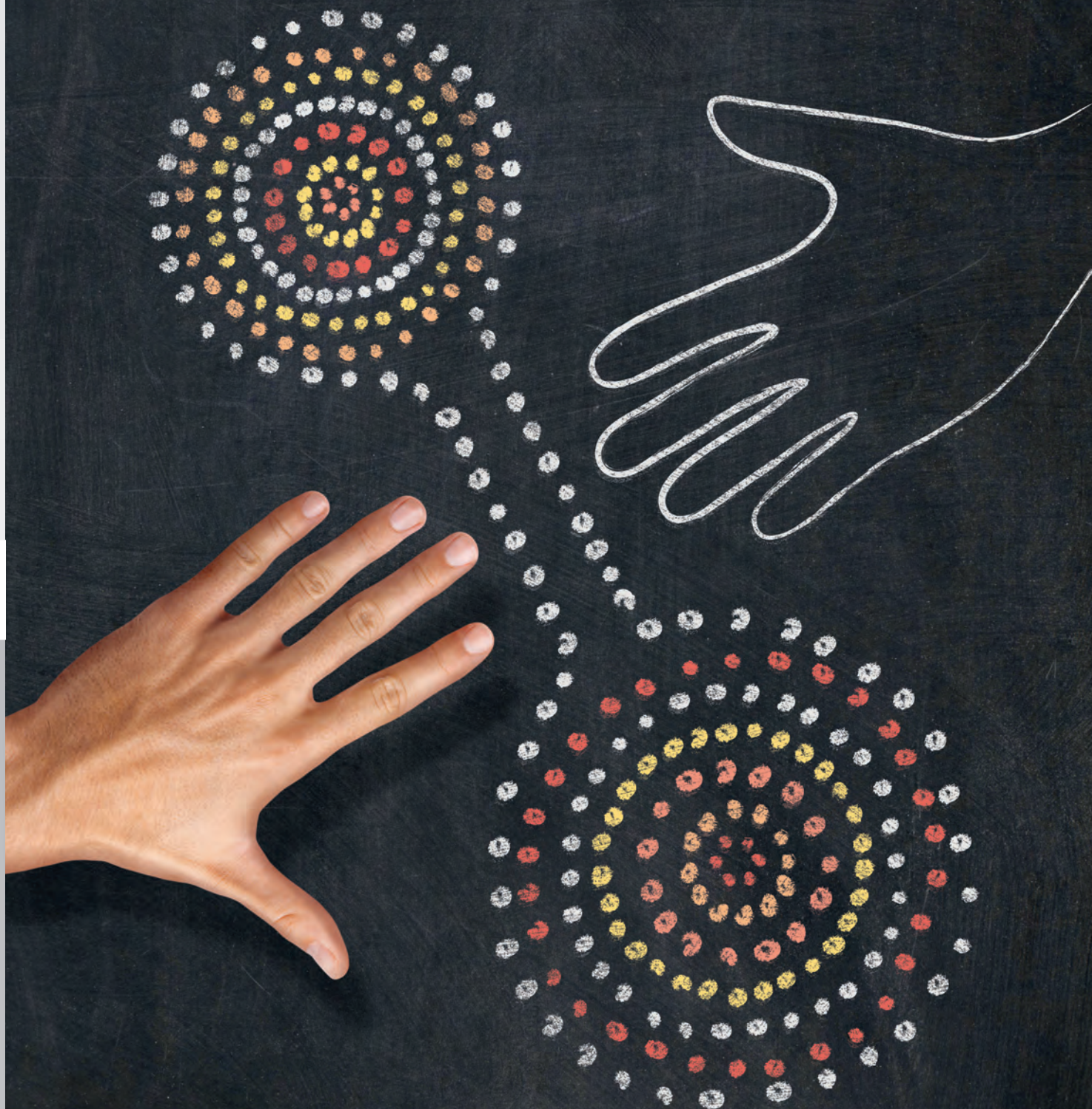
\$7.3m of federal funding has already been secured to provide

2,600

**TRAINING PROGRAMS
FOR CONSTRUCTION
WORKERS OVER THE
NEXT TWO YEARS.**

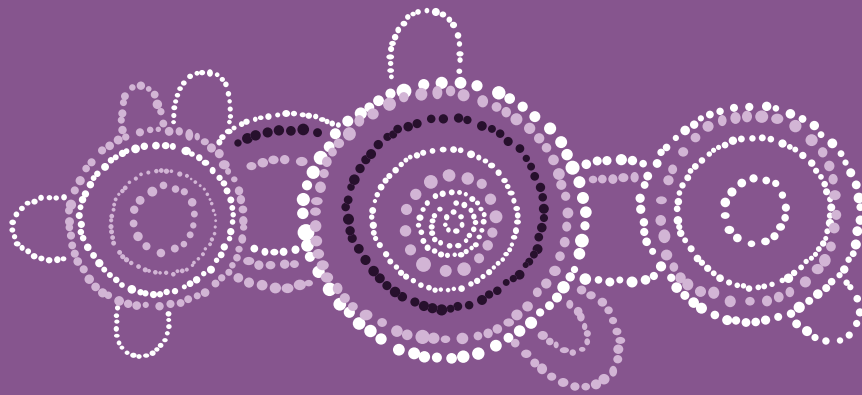
This is being delivered at Barangaroo South in partnership with the Australian Government's Skills Connect program.





DIVERSITY & CULTURE

WHILE INDIGENOUS WORKFORCE RATES HAVE IMPROVED OVER THE PAST DECADE, THEY STILL LAG BEHIND THE GENERAL POPULATION.



BARANGAROO SOUTH WILL HELP ADDRESS THIS PROBLEM AND WILL CONTRIBUTE TO THE COMMITMENTS MADE IN THE LEND LEASE RECONCILIATION ACTION PLAN.



500+

INDIGENOUS WORKERS
WILL BE INVOLVED IN THE
PROJECT.

BY INVESTING OUR PURCHASING
POWER INTO

**INDIGENOUS
ENTERPRISES**

WE ARE SUPPORTING AND
ENCOURAGING NEW BUSINESSES TO
EXPAND THEIR OPERATIONS.

OUR PUBLIC ART STRATEGY

INCLUDES A STRONG THEME TO
CELEBRATE THE INDIGENOUS
HERITAGE OF THE AREA.

WE HAVE MADE
PROVISION FOR
DIVERSITY OF HOUSING
TYPES IN BARANGAROO
SOUTH BY INCLUDING

KEY WORKER HOUSING.





SAFETY, HEALTH & WELLBEING

SAFETY, HEALTH AND WELLBEING ARE KEY PRIORITIES AT LEND LEASE.

WE TAKE AN UNCOMPROMISING LEADERSHIP STANCE ON SAFETY THROUGHOUT THE DESIGN, CONSTRUCTION AND OPERATIONAL PHASES OF THE DEVELOPMENT.



Typically air is recycled within a building, which can spread pollutants and reduce indoor environment quality.

THE COMMERCIAL BUILDINGS
AT BARANGAROO WILL UTILISE

100%

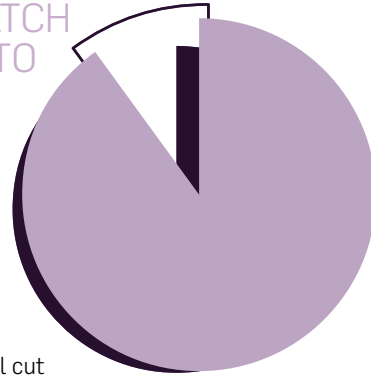
OUTDOOR AIR

DURING OCCUPANCY
HOURS. THIS WILL FLUSH
OUT POLLUTANTS &
PROVIDE A HEALTHIER
WORKING ENVIRONMENT.



AN ON-SITE CONCRETE BATCH
PLANT COULD SUPPLY UP TO

90%



of the project's concrete supply needs. This will cut thousands of truck movements from Sydney's streets.

HEALTHY MATERIALS

USED IN THE FITOUT PROCESS.

24_{HR}

MONITORING OF AIR
AND WATER QUALITY
DURING CONSTRUCTION
IN ACCORDANCE WITH
THE SITE'S ENVIRONMENTAL
PROTECTION LICENCE.

SAFETY PASSPORT TRAINING AND LEND LEASE GLOBAL MINIMUM REQUIREMENTS

will be applied on the site to ensure a safe working environment.

HEALTHY BUILDINGS

will be designed to provide the best environment for occupants including access to daylight, views and fresh air.

CRIME PREVENTION THROUGH ENVIRONMENTAL DESIGN

will provide a precinct that is safe for everyone and maximises active and passive surveillance to reduce crime.





CLIMATE CHANGE

RISING TEMPERATURES WILL INCREASE
THE VOLUME OF WATER ON THE EARTH.
DURING THE 21ST CENTURY, THE
INTERGOVERNMENTAL PANEL ON
CLIMATE CHANGE (IPCC) PREDICTS

SEA LEVELS
WILL RISE A FURTHER
18-59cm.

IN PLANNING FOR THIS, WE HAVE INCREASED
THE HEIGHT OF THE GROUND PLANE AND
UPGRADED STORMWATER INFRASTRUCTURE
TO AMELIORATE STORMWATER IMPACTS ON
THE SURROUNDING AREAS.

WE WILL ALSO PREPARE A CLIMATE CHANGE
ADAPTATION PLAN AS PART OF OUR GREEN
STAR COMMUNITIES COMMITMENT.

SEE CARBON & ENERGY EFFICIENCY TO UNDERSTAND HOW WE ARE
REDUCING BARANGAROO SOUTH'S IMPACT ON CLIMATE CHANGE.





GOVERNANCE & RESPONSIBLE INVESTMENT

TRANSPARENCY AND GOOD CORPORATE GOVERNANCE ARE PART OF THE LEND LEASE CULTURE.

WE BRING THIS TO OUR APPROACH AT BARANGAROO SOUTH.



TO ENSURE WE MEET OUR COMMITMENTS OUTLINED IN THIS DOCUMENT, WE WILL BE:

PUBLISHING AN ANNUAL SUSTAINABILITY REPORT

including independent certification
by an Expert Sustainability Certifier.

CREATING A BIENNIAL REVIEW OF SUSTAINABILITY BENCHMARKS

to ensure the project targets maintain
pace with world's best practice.

EMBODYING RESPONSIBLE CORPORATE CITIZENSHIP

by working with stakeholders such
as the Green Building Council of
Australia, the City of Sydney and State
and Federal Government to seek their
assistance in the implementation and
refinement of our plans.

SEEKING INDEPENDENT RATINGS AND VERIFICATION

such as Green Star targets (see our
energy efficiency section).



MATRIX OF BARANGAROO SOUTH

BENCHMARKING & CERTIFICATION MEASURES

EXPERT CERTIFIER REVIEW

C40 CITIES-CLINTON CLIMATE INITIATIVE.

WORLD RECOGNISED CERTIFICATION

ECO FOOTPRINT / CARBON FOOTPRINT/
SOCIAL RETURN ON INVESTMENT.

SINGLE MEASURE REPORTS -
(ENCOMPASSING MULTIPLE INPUTS)

CARBON NEUTRAL.
WATER POSITIVE.
ZERO WASTE.
COMMUNITY WELLBEING.

METRICS & INITIATIVES TRACKING

GREEN STAR, NABERS, BASIX ETC +
SUBJECT MATTER SPECIFIC EXPERT
REPORTS.

BENCHMARKING TOOLS AND SUPPORTING
EXPERT OPINIONS





VALUE CREATION

OUR SOCIAL RETURN ON
INVESTMENT ANALYSIS
ESTIMATES

≈ \$1.5
BILLION

IN SOCIAL VALUE TO THE NSW ECONOMY AS A RESULT
OF THE BARANGAROO SOUTH DEVELOPMENT.*

BARANGAROO SOUTH IS NOT JUST ABOUT
TREADING LIGHTLY ON THE PLANET AND
CREATING A NEW COMMUNITY.

IT'S ABOUT REDUCING THE BURDEN
ON INFRASTRUCTURE, CREATING JOBS
AND BRINGING A NEW INTERNATIONAL
FINANCIAL SERVICES HUB TO SYDNEY,
PROVIDING A TRIPLE BOTTOM LINE
OUTCOME.



CREATING VALUE FOR THE COMMUNITY

≈ \$947M

IN NEW EMPLOYMENT AND
TRAINING OPPORTUNITIES.

≈ \$125M

CREATING A WORLD-CLASS
SUSTAINABILITY PRECINCT.

≈ \$327M

IN PUBLIC-PRIVATE
PARTNERSHIPS.

≈ \$73M

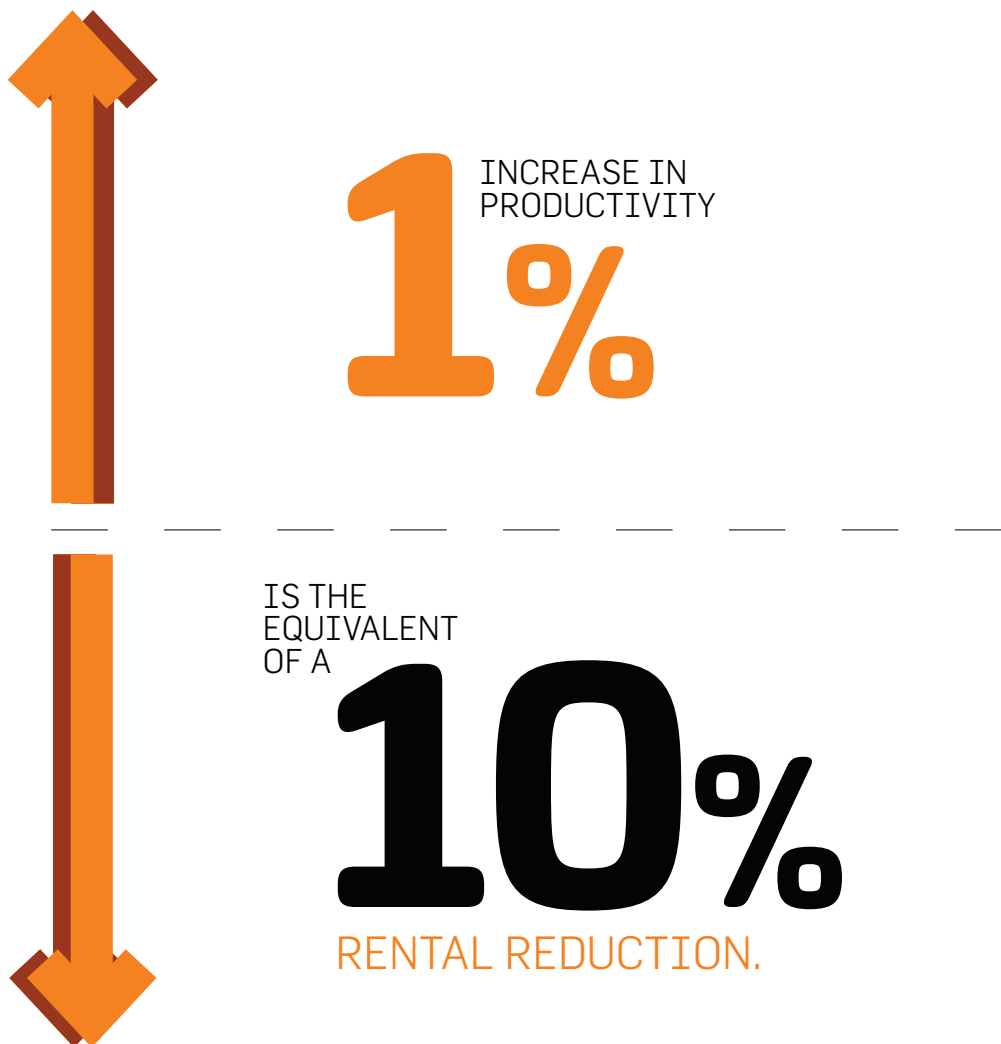
CREATING AN ENERGISED
COMMUNITY AND CULTURAL
DOMAIN.

≈ \$1.5
BILLION
SOCIAL VALUE



CREATING VALUE FOR TENANTS

WHILE RENT AND OUTGOINGS ARE IMPORTANT ASPECTS OF OCCUPANCY COSTS, THE HUMAN ASPECT OF PRODUCTIVITY IS ALSO A KEY PART OF THE VALUE/BENEFIT EQUATION OF OCCUPYING A BUILDING. BARANGAROO SOUTH HAS BEEN DESIGNED WITH THIS IN MIND, OFFERING MODERN, HEALTHIER WORKPLACES THAT PROVIDE A BETTER OFFICE ENVIRONMENT FOR PEOPLE. THIS MEANS MORE PRODUCTIVE EMPLOYEES.



VALUE OF ASSETS WILL BE

FUTURE PROOFED



AGAINST RISING ENERGY, WATER AND WASTE COSTS AND WILL ALSO MEET THE DEMANDS FOR GREENER OFFICES, SUSTAINABLE RETAIL OFFERINGS AND HEALTHY, EFFICIENT HOMES.

WORKERS WILL BENEFIT FROM EXTENSIVE TECHNOLOGY INFRASTRUCTURE DESIGNED WITH WORLD-CLASS RESILIENCE AND SECURITY PRINCIPLES TO MEET THE NEEDS OF LEADING DEMANDS AROUND THE GLOBE.

IN 2012, ON AVERAGE

10.5%

STRONGER INVESTMENT RETURNS WERE ACHIEVED FOR A-GRADE OFFICE BUILDINGS WITH HIGH NABERS ENERGY RATINGS.*

* SOURCE: AUSTRALIAN GREEN PROPERTY INDEX. INDEX SNAPSHOT. SEPTEMBER 2012



BEST PRACTICE DESIGN

Best practice telecommunications, network and building services infrastructure design will ensure resilience and flexibility.



FIBRE NETWORKS

High speed fibre optic networks for base building services ensure future scalability and flexible connectivity options.



WIRELESS OVERLAY

Seamless wireless coverage in building lobbies and public realm to support employee mobility.



TELECOMMUNICATIONS

Capacity planning for multiple telecommunications carriers with diverse feeds from multiple exchanges.



OFF-SITE FIBRE LINKS

Capacity to install your own dark fibre connection to your off-site co-location facility or data centre.



DIVERSE POWER & DATA

Diversity of power and data feeds allowed for in precinct and building designs.



DIVERSE RISERS

Multiple base building and tenancy risers to ensure availability of secure, diverse cabling pathways.



GENERATOR BACKUP

Base building essential services generator backup and space for tenant generators within nominated plant rooms.



INTEGRATED SECURITY

Holistic consideration of physical precinct and building security systems.



ENERGY MONITORING

Monitoring of all power, renewable energy sources, water, gas and waste.



BUILDING DASHBOARDS

Tenancy dashboards which can be tailored across building management systems to track and report real time and trend performances.



DIGITAL SIGNAGE

Adaptable signage systems to communicate event information, advertising and emergency egress information.



INFORMATICS DISPLAYS

Digital displays to communicate key metrics, such as sustainability information about Barangaroo.



WAY FINDING

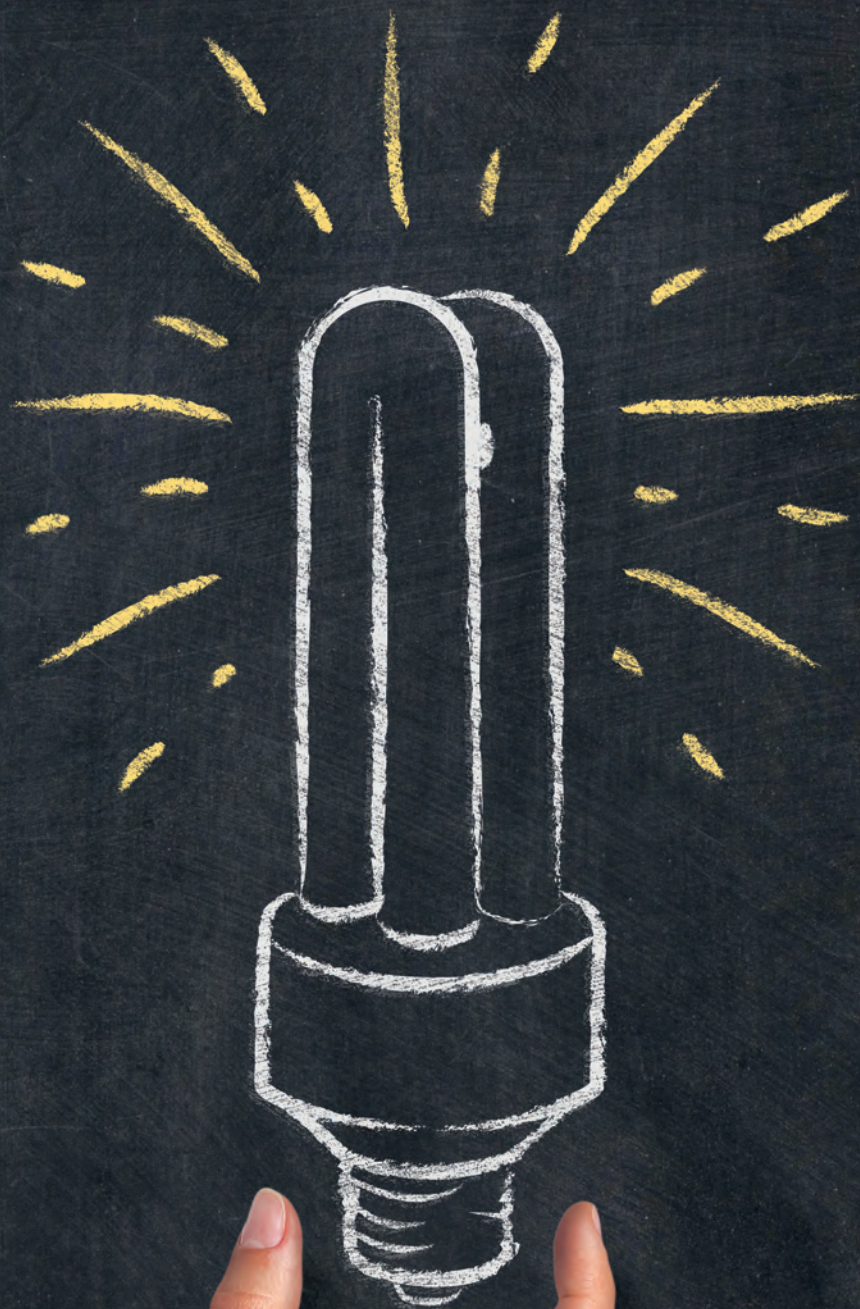
Various way finding and transport information solutions such as interactive maps, amenity locations and transport timetables.



LIFT SCREENS

Digital lift car screens promoting information such as destination, news and advertising.





INNOVATION

INNOVATION IS FUNDAMENTAL TO SUSTAINABILITY. IT'S THE THINKING THAT CREATES ANSWERS TO THE BIG ISSUES.

YOU WOULD HAVE SEEN INNOVATIVE PRACTICES FEATURED WITHIN EACH SECTION OF THIS DOCUMENT.

WE HAVE PUT IN PLACE THE BARANGAROO SOUTH INNOVATION INITIATIVE TO SEEK OUT AND SELECT PARTNERS TO CONTINUE DISCUSSIONS REGARDING TECHNOLOGY, INFRASTRUCTURE AND SUSTAINABILITY SOLUTIONS. WE ARE SEEKING RESPONSES FROM THE MOST INNOVATIVE COMPANIES AND THOSE THAT HAVE THE WORLD'S BEST TECHNOLOGY.

FOR MORE INFORMATION OR TO REGISTER YOUR INTEREST, GO TO:
WWW.BARANGAROOSOUTH.COM.AU



KEY INNOVATION HIGHLIGHTS

CENTRALISED PRECINCT SCALE INFRASTRUCTURE

TO PROVIDE A STEP CHANGE
IN EFFICIENCIES.

See **water and energy** for more about this innovation.

BUILDINGS THAT RESPOND TO
THEIR ENVIRONMENT WITH

PASSIVE & ACTIVE SHADING ELEMENTS

TO ACHIEVE LEADING
SUSTAINABILITY RATINGS.

See **energy efficiency and carbon** for more about this innovation.

A UNIQUE COMMITMENT
TO REVISIT OUR

SUSTAINABILITY BENCHMARKS

EVERY
YEARS

2

TO KEEP PACE WITH
WORLD'S BEST
PRACTICE STANDARDS.

See **governance** for more about this innovation.

INDEPENDENT EXPERT SUSTAINABILITY CERTIFIER

TO AUDIT OUR
PROGRESS AGAINST
OUR SUSTAINABILITY
COMMITMENTS.

See **governance** for more about this
innovation.

OFFICE BUILDINGS
WILL TARGET

6 ★ ★
★ ★
★ ★

GREEN STAR
OFFICE DESIGN
& AS BUILT
V3 RATINGS.

See **energy efficiency** for more
about this innovation.

500+

INDIGENOUS WORKERS
WILL BE INVOLVED IN THE PROJECT.

See **diversity and culture** for more about
this innovation.

PRECINCT GOVERNANCE
TO ACHIEVE

A CARBON
NEUTRAL
OUTCOME IN
OPERATION.

COVERING ENERGY, WASTE AND COMMUTER
CARBON EMISSIONS.

See **carbon and governance** for more
about this innovation.

BARANGAROO SOUTH SUSTAINABILITY TARGETS

OUR PLAN ON A PAGE

CARBON

GOAL OF 20% LESS EMBODIED CARBON COMPARED WITH STANDARD CONSTRUCTION PRACTICES	ZERO NET CARBON EMISSIONS IN OPERATION COVERING ENERGY, WASTE AND COMMUTER CARBON EMISSIONS	GREEN TRAVEL OPTIONS AND COMMUTER CARBON OFFSET	CARBON COMMUNITY FUND FOR CARBON OFFSETS / RENEWABLE ENERGY	INVESTIGATING CO-GENERATION & TRI-GENERATION	ZERO CARBON OFF-SITE WASTE TREATMENT PROCESS
				6,000 sq m OF SOLAR PANELS ON-SITE	

ENERGY EFFICIENCY

ULTRA ENERGY EFFICIENT BUILDINGS INCLUDING SMART SHADING	EFFICIENT CENTRALISED INFRASTRUCTURE		GREEN STAR RATED BUILDINGS	METERING, MONITORING, VISUAL DISPLAYS & EDUCATION
--	--------------------------------------	--	----------------------------	---

WATER

BLACKWATER RECYCLING SYSTEM ON-SITE	RAINWATER CAPTURE	REMOVAL OF COOLING TOWERS	WATER-WISE EDUCATION	WATER SENSITIVE URBAN DESIGN	STORMWATER TREATMENT TO BEST PRACTICE STANDARDS
-------------------------------------	-------------------	---------------------------	----------------------	------------------------------	---

WASTE

TARGETING ZERO NET WASTE TO LANDFILL BY 2020	80% OF OPERATIONAL WASTE DIVERTED AWAY FROM LANDFILL FROM DAY 1	TARGETING 97% DIVERSION OF CONSTRUCTION WASTE AWAY FROM LANDFILL	WASTE-WISE EDUCATION	EASILY ACCESSIBLE PUBLIC DRINKING WATER SUPPLIES
--	---	--	----------------------	--

MATERIALS

LCA ON TOP 20 MATERIALS USED ON-SITE	ANALYSES OF ECOLOGICAL & CARBON FOOTPRINTS	SUPPLIER ENGAGEMENT & PARTNERING	MORE THAN 95% AFS & FSC CERTIFIED TIMBER
--------------------------------------	--	----------------------------------	--

NATURAL ENVIRONMENT

50% PUBLIC SPACE ACROSS WHOLE OF BARANGAROO	ON-SITE WATER TREATMENT PLANT FOR CONSTRUCTION	NATIVE & ENDEMIC SPECIES SELECTION	COMMUNITY GARDENS	GREEN ROOFS & WALLS	CLEANING UP BROWNFIELDS SITE & MARINE HABITAT ENHANCEMENT
---	--	------------------------------------	-------------------	---------------------	---

**CREATING COMMUNITY**

PILOTING THE NEW GREEN STAR COMMUNITIES RATING TOOL	BARANGAROO INNOVATION CENTRE	COMMUNITY AMENITIES & SERVICES	ARTS, CULTURAL & COMMUNITY LEARNING FACILITIES
---	------------------------------	--------------------------------	--

**EMPLOYMENT, SKILLS & TRAINING**

100,000 TOTAL WORKFORCE ENGAGEMENT	10,000 NEW ACCREDITED SKILLS QUALIFICATIONS	2,600 TRAINING PROGRAMS FOR CONSTRUCTION WORKERS	50,000 LEARNING OUTCOMES	30,000 STUDENTS LEARNING ABOUT THE PROJECT	100 'NEXT GENERATION' INDUSTRY LEADERS
------------------------------------	---	--	--------------------------	--	--

**DIVERSITY & CULTURE**

INDIGENOUS ENTERPRISE PROCUREMENT	500+ INDIGENOUS WORKERS	PUBLIC ART STRATEGY	KEY WORKER HOUSING
-----------------------------------	-------------------------	---------------------	--------------------

**SAFETY, HEALTH & WELLBEING**

ONE PASS AIR-CONDITIONING	ON-SITE CONCRETE BATCHING PLANT	HEALTHY BUILDING MATERIALS	24 HOUR AIR AND WATER QUALITY MONITORING	SAFETY PASSPORT TRAINING	CRIME PREVENTION THROUGH DESIGN
---------------------------	---------------------------------	----------------------------	--	--------------------------	---------------------------------

**CLIMATE CHANGE**

INCREASED HEIGHT OF GROUND PLANE	UPGRADED STORMWATER INFRASTRUCTURE	CLIMATE CHANGE ADAPTATION PLAN
----------------------------------	------------------------------------	--------------------------------

**GOVERNANCE & RESPONSIBLE INVESTMENT**

REGULAR REPORTING	STAKEHOLDER ENGAGEMENT	ANNUAL SUSTAINABILITY REPORTS	BIENNIAL REVIEW OF BENCHMARKS	INDEPENDENT RATINGS AND VERIFICATIONS
-------------------	------------------------	-------------------------------	-------------------------------	---------------------------------------

**VALUE CREATION**

NEW EMPLOYMENT & TRAINING OPPORTUNITIES	FUTURE PROOFED INVESTMENTS	HEALTHY BUILDINGS IMPROVING PRODUCTIVITY	REDUCED BURDEN ON ENVIRONMENT & INFRASTRUCTURE
---	----------------------------	--	--

**INNOVATION**

CENTRALISED PRECINCT SCALE INFRASTRUCTURE	BIENNIAL REVIEW OF OUR SUSTAINABILITY STRATEGY		INDEPENDENT EXPERT SUSTAINABILITY CERTIFIER
OFFICE BUILDINGS WILL TARGET 6 GREEN STAR OFFICE DESIGN & AS BUILT V3 RATINGS	ZERO NET CARBON EMISSIONS IN OPERATION COVERING ENERGY, WASTE AND COMMUTER CARBON EMISSIONS	500+ INDIGENOUS WORKERS WILL BE INVOLVED IN THE PROJECT	INNOVATIVE MATERIAL SELECTION

ANDREW WILSON

MANAGING DIRECTOR,
BARANGAROO SOUTH,
LEND LEASE.

Since Lend Lease was founded in the 1950s, we have been at the forefront of creating much of the Sydney CBD. Over this time we have established a strong track record of delivering many of the city's ground breaking buildings.

In our first decade we built the country's first reinforced concrete high rise office (Caltex House) and the world's then tallest light-weight concrete skyscraper (Australia Square). In the most recent decade we have built Australia's first Green Star building (30 The Bond) and in 2012 delivered the world's most sustainable 6 Star Green Star office campus building (Commonwealth Bank Place, Darling Quarter). Our ambition to deliver the best is unwavering.

We also take our responsibility to future generations very seriously. Lend Lease's founder, Dick Dusseldorp, believed in a "community of interest" and that business needed to justify its worth to society, with greater emphasis placed on environmental and social impact rather than straight economics. Caring for the environment and for the communities in which we work is part of the company's DNA.

Today we are undertaking the next phase in our sustainability journey, with the creation of a precinct rather

"IT'S ABOUT CHANGING THE WAY WE ALL WORK, LIVE AND THINK TODAY TO BETTER SHAPE THE WORLD WE WILL PASS ON TO THE NEXT GENERATION"

than just a building, through the transformation of Barangaroo South, the former container wharf on Sydney harbour.

In partnership with the NSW Government we are creating a new piece of the city – a vibrant new waterfront financial district, which will be a mix of world-class office space and premium residential buildings, along with shopping, dining, an international hotel and public spaces – all on Sydney's famous harbour foreshore.

At its core sit International Towers Sydney, which will be Australia's most advanced and most sustainable high rise workplaces. International Towers Sydney will help to redefine Sydney's position as a major financial centre in the Asia Pacific region and to deliver Australia's first large scale carbon neutral precinct.

To achieve these ambitions we have put in place a Climate Positive Work Plan for Barangaroo South. This considers in great detail the sustainability aspects of everything

we are doing on the project and how it is delivered. From the materials we use to how energy is generated, from water recycling to how waste is handled, we have looked at the project from every angle to identify ways we can design out, share, minimise or recycle to genuinely reduce the impact that building Barangaroo South has on the planet and ensure we leave a positive legacy for the community. It's about changing the way we all work, live and think today to better shape the world we will pass on to the next generation.

This summary of our sustainability plans for Barangaroo South provides an overview of the actions and measures we are taking to ensure its delivery enhances the environment, the economy and society. We hope you find it interesting and informative and we welcome any feedback you may have. We are very excited about the transformation of Barangaroo South and its role in making Sydney an even better place to work, live or visit than it already is.

GET INVOLVED

WE WOULD LOVE TO HEAR YOUR
THOUGHTS ON CREATING A SUSTAINABLE
FUTURE, CONTRIBUTE VIA OUR BLOG, THE
OPEN CONVERSATION

www.openconversation.com.au

OR EMAIL US:

sustainability@lendlease.com

TO FIND OUT MORE ABOUT SUSTAINABILITY
AT BARANGAROO SOUTH, VISIT

www.barangaroosouth.com.au





www.barangaroosouth.com.au